



MILLBRAE COMMUNITY FOUNDATION

Proudly Serving the Millbrae Community since 1996

P. O. Box 1612 Millbrae, CA 94030

www.millbraefoundation.org

(650) 737-1905

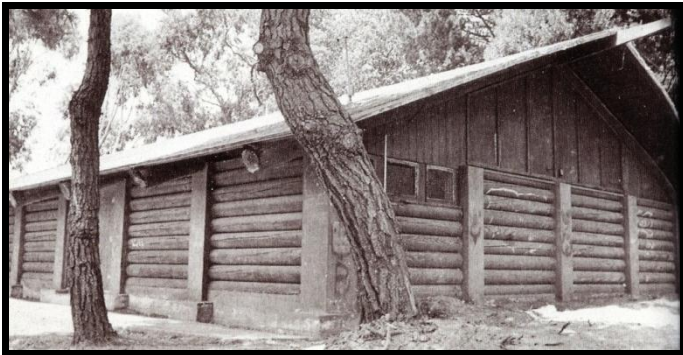
May 2011

Join Your Neighbors in Supporting the Millbrae Community Youth Center Project

The Millbrae Lions Club, Millbrae School District, City of Millbrae, and members of the community are working on a cooperative project to renovate the Millbrae Scout House adjacent to Taylor Middle School and transform it into a community center to meet the needs of our local youth. The renovated building will provide an ideal venue for after-school programs, educational and recreational opportunities for all Millbrae youth, evening and summer community programs, and much need meeting space for classes, clubs, and special events. The Millbrae Community Foundation, a qualified 501c(3) charitable organization, has established a Designated Fund to receive financial contributions for this special project. Won't you please consider making a donation today to help make this facility a reality for all the community to enjoy!



Several local organizations have played key roles in the Scout House renovation process. The **International Facilities Management Association** has adopted our project through local non-profit organization **Rebuilding Together Peninsula** and has coordinated a team of skilled volunteers to make major improvements to the building, including new flooring, interior and exterior painting, and construction of an access ramp to the building entrance. Enthusiastic volunteers from the **Central Peninsula Church of Millbrae, Millbrae Lions Club, Roche Pharmaceutical, Kohl's, Boy Scouts of America, Taylor Middle School, and the Millbrae Leos Club** have all pitched in to lend a helping hand. The **Mid-Peninsula Boys and Girls Club**, which runs excellent after-school programs in Daly City and San Mateo, have expressed interest in providing a full spectrum of youth services at the Scout House site. The creation of a Millbrae Community Youth Center has grown from a mere idea into a tangible reality in just over one year. Won't you please join the growing number of committed project supporters by sending a contribution today to the Millbrae Community Foundation and designating it towards the Millbrae Community Youth Center? For more information, please contact Fundraising Chair Denis Fama at (415) 602-2741 or Dennyduz@aol.com.



What are your special memories of the Millbrae Scout House? Throughout the years, the Scout House hosted meetings, dinners, ceremonies, sign-ups, and award presentations for the Millbrae Lions Club, Scout groups, and local youth sports leagues. Since the early 2000s, the once-vibrant Scout House has been shuttered and neglected. Due to the hard work and dedication of local residents, businesses, and organizations over the past year, however, the Scout House is in the midst of a transformational renaissance. Please take a moment to make a financial contribution or volunteer your time to be a part of the Scout House's rebirth!

Your contribution to the Millbrae Community Foundation supports projects and programs throughout the community

Over the past 15 years, the Millbrae Community Foundation has awarded financial grants to support the following projects and programs that provide valuable amenities and benefits to Millbrae residents:



The Millbrae Community Foundation awarded a **\$2,500** grant to **Millbrae Community Television (MCTV)** in 2010 to provide supplemental financial support for this valuable service when it faced a funding shortage. MCTV serves Millbrae by broadcasting City Council and School Board meetings, videotaping and broadcasting school concerts and sporting events as well as other community activities and events, posting a community bulletin board, and offering many hours of non-traditional programming covering a broad range of topics and issues.

The Millbrae Community Foundation provided a **\$2,000** grant to the **Second Harvest Food Bank** in 2009 in support of the **Millbrae Seniors Brown Bag Program**. This program provides a weekly bag of groceries to low-income seniors and disabled individuals (ages 55 or older) in Millbrae. The Brown Bag Program is organized and implemented by seniors at the Millbrae Recreation Center, and is vitally important in our community as our seniors benefit both nutritionally and socially from the program.



The Millbrae Community Foundation presented a **\$6,000** grant to the **Millbrae School District** in 2009 to help pay for **School Crossing Guards** at our local elementary schools. Adult crossing guards protect the safety of our students as they cross busy intersections on their way to school each day. This is a perfect example of how the Millbrae Community Foundation serves as an effective means to achieve a community-wide goal like student safety by combining a large number of modest financial contributions from community members like you into a substantial grant that helps sustain an essential service that benefits all of us.

The Millbrae Community Foundation awarded a **\$9,500** grant to the **City of Millbrae Police Department** in 2007 in support of the **Police Canine Program**. Reese, the police dog pictured at right, was brought on as a member of the Millbrae Police Department as a result of funding provided by the Foundation. Police K-9 dogs serve as loyal and valued resources for search and rescue assignments, tracking down fleeing criminal suspects, and sniffing out elusive evidence in crime cases.



MCF Officers: Janet Fogarty, Dan Lawson, Catherine Quigg, Pam Herriott

Board of Directors: Beth Anderson, Paul Bourque, Calvin Chin, Scott Fong, Walter Gladwin, Joe Teresi, Debbie Van Wart; **Emeritus Directors:** Terry Bauer, Art Lepore, Kay Runkle, David Slosberg

Trustees: George Corey, Alma Massolo, Joan Ryan, Mary Vella Treseler

Millbrae Community Foundation is a 501(c)(3) charitable organization. If you would like to receive Millbrae Community Foundation newsletter updates, please send your email address to info@millbraefoundation.org.